

Buzzin' About

March 2018

The Miami Valley Beekeepers Association

Newsletter

Monday, March 5, 2018
7:00 p.m.
Brukner Nature Center

Agenda

Club Updates
Membership Renewals
Swarm List Sign-up
Bee Bucks
Etc

Guest Speaker:
Tony Rimkus

MVBA CONTACTS

President

Robert Dorsten

Vice President

Lydia Pleiman

Secretary

Chrystal Reese

Treasurer

Francisco "John" Martinez

Executive Board

Jeff Gerhart

Katie Stefaniak

Newsletter

Terry Lieberman-Smith

Apiary Managers

Jeff Mahar

Katie Stefaniak

Renew your membership

Can't attend
February's meeting?

Use the renewal form
on page 7.



Topic:

Autopsy of A Hive

Planning For A Great 2018 Beekeeping Year:

Packages

Steve Johnson will be heading down to Georgia 4 times this year to pick up packages. #3 Italian packages are \$110.00 Visit www.olddrone.net for complete details.



President's Letter

First off, I should take a moment to extend a very warm welcome to all our new members. During our February meeting we had a record turnout, with roughly 3/5 of the people in attendance taking the very first steps at getting into beekeeping. We welcome you with open arms and wish you a very "sweet" year.

Moving onto the hive, you more seasoned beekeepers know that now is the time when things start ramping up. The queen has likely been laying since the winter solstice and now is when the bees really start to burn through resources. More hives die from starvation now than do the rest of the winter. You can do a "heft test" on the hives to see how much honey is left and on warmer days you can crack the lid and see where the girls are at.

If things are light, don't be afraid to give them sugar bricks, fondant, or even dry sugar poured on the in-

ner cover (the method I use) to help get them the last sprint across the finish line to spring. Now would also be a perfect time to start giving them pollen patties if they didn't stock up enough pollen in the fall.

I'll look forward to seeing everyone on March 5!

Robert Dorsten
MVBA President

Graham School Grant Update

The Graham Middle School Falcon Farm Junior Beekeepers have been hard at work.

We received our supplies last Tuesday and the kids finished the first six boxes yesterday. They began building the frames today and finished the first seven. At this pace, the kids are on track to receive our bees on March 27th. The hives will be located near the new greenhouse, with an organic clover pasture planted nearby. Finally, our school is having a seed drive to collect pollinator friendly seeds, which we plan to sew in raised beds around the property. Bee fever is catching on at our school!

Thanks again for giving us this opportunity, Lisa

MVBA Swarm List- An Added Benefit of Being an MVBA Member

It pays to be an MVBA member! Sign-up at the February or March meeting. The list will be posted on the MVBA website, and sent out wide and far to fire departments, police departments, parks, townships, etc.



**MIAMI VALLEY BEEKEEPERS ASSOCIATION
TREASURER REPORT
Francisco Martinez, Treasurer
February 2018**

As of 25 Feb 2018 Total Holdings: \$2,204.39

This reporting period included the donation of 500.00 to Graham middle school's Falcon Farms beekeeping program, which was offset by the membership fees collected via Paypal and our first meeting of 2018.

**MVBA MEETING MINUTES
Chrystal Reese, Secretary
February 5, 2018**

Meeting called to order at 7 PM by President, Robert Dorsten. There were 93 guests and members in attendance.

Robert began the meeting by introducing the 2018 MVBA Board:

| | |
|------------------|-----------------|
| Robert Dorsten: | President |
| Lydia Pleiman: | Vice President |
| John Martinez: | Treasurer |
| Chrystal Reese: | Secretary |
| Katie Stafiniak: | Member at Large |
| Jeff Gerhart: | Member at Large |

Robert highlighted the benefits of being a MVBA member, which include participating in the Mentor/Mentee program, being on the swarm list, and taking part in the Emergency Action Program. The Emergency Action Program is currently in need of a program manager. This important program helps a beekeeper in time of crisis, such as a fire or flood, move or manage an apiary. Interested program managers should contact Robert.

John Martinez spoke regarding the revised Bee Bucks Program. Bee Bucks can be earned during the year by attending meetings, apiary instruction, and helping at MVBA functions. The Bee Bucks can then be used in the revised raffle format for beekeeping merchandise at the November carry-in dinner and elections.

Robert presented information on 2018 Guest Speakers :

March 5: Autopsy of a Hive and Cleaning Up for New Bees – Tony Rimkus

April 2: The Lies We Tell Ourselves, or How Not to Be a Successful Beekeeper – Terry Lieberman-Smith

May 7: TBD

June 4: Using Wax and Honey in Soaps and Lotions – Tanya Brown, Living Simply Soaps

July 2: Pest Management and Tips for a Healthy Hive

August 5: SUNDAY: Public Honey Harvest

Sept 10: (Moved to 2nd Monday due to Labor Day): Bee Anatomy and Intelligence vs. Instinct – Vickie Bowman, Buckeye Belle Queens

October 1: TBD

November 5: Member Carry-in Dinner, Bee Buck Raffle and Election of 2019 Board.

Vickie and Lisa Bowman spoke about the new beekeeping program at Graham Local School. They thanked the MVBA for the \$500 grant that helped them to begin the program.

Robert offered a presentation on Getting Started in Beekeeping. The presentation covered topics such as reasons for keeping bees, types of hives, necessary equipment, location selection and acquiring bees.

From Catch the Buzz - Where There's Lead in the Environment, There's Lead in Honey Bees.....

Researchers have used bees to monitor pollution for the first time in Australia and have found significant lead levels in the insects, depending on location.

The *Sydney Morning Herald* newspaper reports the levels of metal varied depending on the history of the land.

Scientists say Sydney dwelling bees are affected by former leaded gasoline emissions from the '70s, '80s and '90s, with highest lead levels reaching 230-440 micrograms a kilogram.

But 715 miles to the west in Broken Hill, where lead mining is carried out, bees possessed much higher levels of lead, with about 2,570ug/kg detected.

Project leader Mark Taylor of Macquarie University says the findings provide a stark warning against the unsafe use of chemicals in the environment.

"They don't degrade that quickly, they get into the ecological systems and they don't break down in

many cases and they are persistent and typically harmful," he tells the newspaper.

"This shows us that the contaminants are being mobilized and are getting into our ecological and food systems."

Taylor says the bees were protecting the quality of their honey by absorbing and filtering the lead into their systems and not excreting it all when in the hive.

"The honey is actually OK to eat — the bees are taking the hit," he says.

The research showed worker bees are more contaminated than drones.

"Worker bees spend a lot more time out of the hive than drone bees," Taylor says.

"Emissions are ongoing and being distributed through cities and its getting to the bees, the birds and humans. We know lead is harmful, end of story."

Get Your Gardens Ready for Blooms

Pollen Sources: Alder, Elm, Maple, Forsythia

Nectar and Pollen: Dogwood, Crabapple, Willow, Dandelion

Trees are one of the most important early spring source of forage for our honey bees. Pollen helps ensure healthy bees and a large population of foraging bees for the nectar flow.

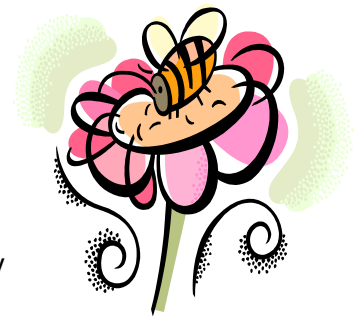
Ash trees accounted for almost 22% of all pollen that our bee collected. We need to replace those trees with other spring pollen sources.

Plant trees this spring to help ensure a future pantry for your bees.

www.miamiswcd.org/2018%20Tree%20Seedling%20order%20form.pdf

<http://montgomeryswcd.org/2018treesaleform.html>

http://www.darkeswcd.com/uploads/2/3/6/4/23647034/order_pamphlet_2018.pdf



Changes Coming to the Ohio Sensitive Crop Registry (OSCR)



OSCR IS CHANGING!

Ohio's Sensitive Crop Registry has partnered with the non-profit company FieldWatch, Inc. to provide an improved mapping system for sensitive crops and honey bees. The new OSCR by Field-Watch system will launch soon and replace the existing Ohio Sensitive Crop Registry you've signed up for previously.

Benefits of the New System

The registry systems provided by FieldWatch are widely used across the country, with 14 member states enrolled. The tools have been developed with a diverse stakeholder representation, including major producers, applicators, apiarists, manufacturers, and others in the industry.

- A new, simple and easy-to-use system for **adding** and **searching** locations.
- Improved compatibility, usable on many different browsers and devices.
- Access to a larger group of applicators (co-ops, aerial spraying, custom applicators, etc.)
- Data is available to view online, download, or live-stream through a software provider. Optional email alerts when new sites are mapped.
- Free to use – OSCR by FieldWatch will continue to be free to access through the website. Advanced features like downloading and live-streaming data will require a paid membership for applicators.
- Continued privacy - users will have to create an account to see mapped locations. Locations in Ohio will not be viewable by the public.

WHAT HAPPENS NEXT?

You don't have to do anything right now, an official announcement will be made when the new system is launched. You will be contacted again with details on how to switch to the new OSCR tool.

The current OSCR website will remain open for a few months during the transition, so that applicators can continue to check the map for existing locations. Eventually the old site will be shut down and only the new OSCR by FieldWatch system will be used.

Again, there is nothing to do right now. Additional details will be sent out when the new system is ready. If you have any questions, you can contact:

Jared Shaffer, Plant Health Inspector
SensitiveCropRegistry@agri.ohio.gov

P 614-728-6386

Division of Plant Health
 (614) 728-6987
sensitivecropregistry@agri.ohio.gov

www.ohioagriculture.gov/scr

The Basic Buzz in the Apiary

March

- Continue emergency feeding, if necessary.
- Feed pollen supplements or substitutes, if needed.
- First quick inspection of brood nest, if weather permits.
- Check for and clean up dead colonies.
- Clean out entrances and bottom boards.
- Attend conferences

April

- Monitor colony stores, esp. if weather is cold & wet.
- Inspect brood nest for laying queen, disease, etc
- Introduce package bees on drawn combs.
- Requeen colonies with failing queens.
- Reverse brood chambers when weather moderates.
- Add supers to strong colonies at maple or dandelion bloom.
- Unite weak colonies.
- Equalize strength of all colonies.

MVBA Apiary Report

Brukner Nature Center informed us that the barn and intern house demolition was going to start in February. To protect the hives from dust and possible asbestos exposure we moved the hives.

Vickie Bowman worked with The Miami County Park District to let us temporarily place the hives at Wanamacher Park at the end of Monroe Concord Rd. Pete Soski came up from Miamisburg to do the heavy lifting of the hives. Thank you Pete!

We'll move the hives back when Brukner informs us the demolition is complete and it's dry enough to get back to the hives with the truck and trailer without tearing up the ground.

We've continued to feed with winter patties since the hives were feeding at the top of the boxes. Three empty frames were removed to make room for more patties since there wasn't a shim placed on the boxes to accommodate the additional patties.

Good news is the bees in both hives were happily flying on the warmer days. Let's hope they found the Maple trees blooming and were able to bring in some fresh pollen.

GO BEES!

MVBA EMERGENCY ACTION PLAN KIT

Members of the MVBA have had emergencies where they have had to either move their hives or seal them for what ever reason. The executive board has decided to have a plan in effect if this happens again.

MVBA is putting together an emergency kit and call list to assist members if they are in need of assistance in an emergency.

WHAT KIND OF EMERGENCY: flood / vandalism / wind damage / insecticide spraying / etc

WHO GETS HELP : only members who sign up to volunteer. There will be a sign up sheet. On the sheet you will be asked how you can help (eg. Labor, truck, trailer, experience) your name and phone number. No emails

INFO NEEDED WHEN CALLING FOR HELP : where, when, why, and what help is needed. Do the hives need moved or sealed or just put back together.

ITEMS IN THE KIT : screen, staples and staple gun, duct tape, straps, shims, entrance reducer

Sign up at the Welcome Table during MVBA Meeting in February.

We are looking for someone to help manage this great program please contact: miami-valleybeekeepers@gmail.com

Miami Valley Beekeepers Association Membership Form 2018

Membership dues are \$20 per calendar year

Membership benefits include:

- Monthly meetings (exp. For Dec/Jan) with educational speakers
- Monthly e-zine with beekeeping articles and other features
- Sponsoring public presentations
- Education in the MVBA Apiary
- and more!***

Name

Address

Phone

Email

Make checks out to: Miami Valley Beekeepers Association and Remit Payment to:

Miami Valley Beekeepers Association

900 Antioch School Rd

Vandalia OH 45377

Bee-ing a Step Ahead



Remember to register your hives:

http://www.agri.ohio.gov/public_docs/forms/plant/Plnt_4201-002.pdf

Our Official Facebook Page:

<https://www.facebook.com/miamivalleybeekeepers/>

MVBA 2018 Speaker Schedule

- February 5 – Getting Started in Beekeeping – Robert Dorsten
- March 5 – Autopsy of a Hive & Cleaning up for New Bees – Tony Rimkus
- April 2 – The Lies We Tell Ourselves - Terry Lieberman-Smith
- May 7 – To Be Determined
- June 4 – Using Wax and Honey in Soaps and Lotions - Tanya Brown with Living Simply Soap
- July 2 – Pest Management and Tips for a Healthy Hive
- August 5 (SUNDAY) – Annual Honey Harvest
- September 10– Bee Anatomy and Intelligence vs Instinct – Vickie Bowman with Ohio Buckeye Belle Queens
- October 1 – To Be Determined
- November 5 – Member Carry-In, Officer Elections, Bee Buck Raffle