

Buzzin' About

October 2018

The Miami Valley Beekeepers Association

Newsletter

Monday, October 1, 2018
7:00 p.m.
Brukner Nature Center

Agenda
Apiary Update
Bee Bucks Update

Topic:

Equipping Your Apiary

MVBA CONTACTS

President

Robert Dorsten

Vice President

Lydia Pleiman

Secretary

Chrystal Reese

Treasurer

Francisco "John" Martinez

Executive Board

Jeff Gerhart

Katie Stafiniak

Newsletter

Terry Lieberman-Smith

Apiary Managers

Katie Stafiniak

Vickie Bowman

MVBA Carry In November Dinner:

Nominations
Elections
Bee Buck Auction/Raffle

MVBA provides the chicken, paper plates, cups, ice and beverages.
Members bring a dish to share and their own forks/spoons/knives.

If your last name starts with A-F please bring Salad

If your last name starts with G-L please bring Starch

If your last name starts with M-R please bring Vegetable

If your last name starts with S-Z please bring Dessert

Sign up at the October meeting, or contact Chrystal Reese : reese.chrystal@gmail.com

Vice-President Notes

You may notice that with the cooler nights creeping up on us, the fall blooms of goldenrod and aster are quickly diminishing. I personally have watched my goldenrod turn from a bright yellow, to gold, and sooner than I would like, it will be brown. If you don't have at least 80 pounds of honey in your hive, start fall feeding ASAP as time is running out. If you haven't already, switch to a 2:1 syrup - that's 2 parts white sugar to 1 part water. As we heard from Vickie at the last meeting, this sugar-heavy syrup allows the bees to dehydrate and store the syrup more quickly. How much syrup should I feed? Remember, honey is about 80% sugar, so if you need, say 80 pounds of honey to overwinter, that equals 64 pounds of sugar. If you have no stores right now, that is how much *sugar* you will need to feed to get your girls to the 80 pounds they need for the winter. Don't be stingy!

Also, don't forget to feed pollen. "Qu'ils mangent de la brioche" or "let them eat cake" didn't work out for Mary Antoinette and it will not work for the bees. Bees need the protein found in pollen. On this note, we will have information about the bulk order of winter patties at the October meeting. But don't wait to start feeding protein until the winter. Protein allows for lots of brood next spring.

At this time, you will also want to remove your queen excluders. Bees like to chimney to food and if the food is above your excluder, the bees might just leave the queen behind. As part of your winter prep and as defense against the invasion of yellow jackets, wasps, hornets, mice and any other creatures that want to cuddle up with our ladies, put on entrance reducers. This allows the ladies to protect themselves. There are many other winter prep topics from moisture control, to varroa, to candy boards and more, but we will leave that to discuss at the October meeting. Until then, keep your veil tight, your smoker lit, and your hive tool handy. Winter is coming.

Lydia Pleiman
MVBA Vice-President

MVBA Apiary Report

We have completed treatment for Varroa mites on the apiary using Api life Var. We will be checking soon for a follow-up mite count. Two of our hives are continuing to work diligently, getting ready for winter. The third hive continues to be fed 1:1 sugar water with a splash of "honey bee healthy". It is growing heavier by the day and taking on a gallon of syrup every other day.

Soon we can switch to a 2:1 sugar/water ratio as the weather cools. In the next couple weeks we will prepare for winter by taking off extra honey supers, and arranging brood and honey frames according to the tips we learned from Vickie Bowman in the September MVBA meeting.

It seems like the hive beetle population in the hives is shrinking and we have added "beetle bee gone" sheets (cut into quarters and placed in the corners of the boxes where the beetle like to hide) to hopefully continue their demise.



MVBA Meeting Minutes - 9/10/18

Chrystal Reese, Secretary

Lydia Pleiman started the meeting at 7:03 PM.

Apiary Report – Katie Stafiniak will be starting mite treatments on the hives next week (week of Sep 17th). The honey harvest was successful, with approximately four boxes of honey harvested that day.

Lydia received a call before the meeting that a mentor is needed in the Springfield area. The call was from a first-year beekeeper who would like guidance and assistance.

Upcoming Events:

Sep 19th – Monthly event - support Brukner Nature Center by dining at Piqua Buffalo Wild Wings. Flyers were available with details.

Sep 29-30 – Vickie Bowman will be offering beekeeping classes.

Deb from Brukner Nature Center gave an update on the new building. They've had good fund-raising, and expect to break ground in the near future.

Lydia brought two of the painted boxes from the Honey Harvest. The boxes will be used in the Apiary next year, and we'll plan to have box painting at next year's Honey Harvest.

Vickie talked about the 1,000 Kids information program, and showed the new banded t-shirts volunteers will wear. She recognized the people who have stepped forward to help with the program – Don Richardson, Sue Evans, Kathy Zimmerman, Lynelle Miller, John Martinez, Chrystal Reese, and Terri Lieberman-Smith. Vickie also recognized Ted Duncan for his volunteer efforts with Farm Days in the schools.

Terry Lieberman-Smith talked about the upcoming OSBA Conference, Nov 3rd, in Plain City. She gave a list of speaker and events, and handed out flyers.

The featured speaker of the night was Vickie Bowman. Her first topic was the Holst Milk Test for American Foul Brood (AFB). She distributed step-by-step instructions on how to conduct the test, and ensure AFB isn't present in your hives. Many of us

can be lulled into a false sense of security, however, AFB is in the area and beekeepers need to be aware.

Vickie also talked about the Bee Lab in Beltsville, MD. This is a good resource to test for Nosema. Vickie discussed two methods of getting samples. One method is to use a small pill-type bottle with 70% isopropyl alcohol. Scoop up some bees into the alcohol, and then drain off the alcohol. Send in the expired bees for testing. The second method is the Smear Test. For this test, the beekeeper will swab a brood cell with a Q-Tip. Wrap the Q-Tip in a paper wrap (not plastic!), and send that to the Lab. In both methods, the results will usually come back in a couple of weeks. A traditional treatment for Nosema has been Fumigilin, however, the maker of Fumigilin has closed down, and existing stores of the substance will likely be exhausted within about a year. With Fumigilin no longer available, the best treatment for Nosema is to feed the colony very heavily, and expose it to sunlight.

Because we are at the end of Summer, Vickie also talked about over-wintering hives. A very important element of preparation is to test and treat for Varroa Mites. We should also be removing Small Hive Beetles and Wax Moths as much as possible. After treatment, one must get the hive heavy with honey stores. At this point, we should be feeding with 2:1 sugar syrup and winter patties (which are sold at the OSBA Conference...). In this region, we want the hives to weigh about 80 pounds to ensure they have enough honey for the winter. As the beekeeper closes up the hive for the Winter, they should move honey to the center and above the cluster, and insulate the hives as preferred. Ventilation is vital to keep moisture out of the hive. This is also the time to combine weak hives with strong hives. Do not combine two weak hives – that will only make a single weak hive. Emergency feeding of sugar bricks or fondant will most likely be needed in late Winter. Planning ahead is important – right now, we're preparing for December; in December, we'll be preparing for April.

With all questions answered, the meeting adjourned at 8:20 PM.

Beginner Beekeeping Class Starts September 29

Vickie Bowman

Vickie Bowman is offering a 2 day "Beginning Beekeeper" class at Brukner Nature Center, starting September 29th. This hands-on workshop will cover equipment and feeding needs, where to get bees, placement of bees, how to help your bees stay healthy, the birds and the bees, forage, how to manipulate your hives, recognizing and treating diseases, getting your bees through their first year and much more.

Participants will also build their first frame, so please bring a pair of pliers, box cutter and tack hammer to the first class. A free one year membership to the Miami Valley Beekeepers Association and a free one year membership to the Ohio State Beekeepers Association is also included. Membership in MVBA gives you access to mentors, program speakers and hands on teaching hives at the MVBA/BNC apiary.

The fee is just \$60/person for both class sessions. There will be a 1 hour break for lunch (bring a sack lunch or eat at a local restaurant). Class registration deadline is Wednesday, September 26 . Payment is due at the time of registration (cash or check only). If mailing a check, please include "Bee School" in the memo area. Questions, call Vickie at 937-947-1568. (Must be able to attend both days)

OSBA Fall Conference—

Saturday, November 3, Plain City, OH

This year's OSBA Fall Conference at Tolles Career and Technical Center in Plain City OH will be another record-setting event. Guest speakers include:



Dr. Marla Spivak, Dr. David Tarpy, Dr. Reed Johnson, and others....

Our growing line-up of vendors include: Betterbee, Bee-Pothecary, Brushy Mountain Bee Farm, Dadant & Sons, Kelley Bees, Mann Lake, Reid's Apiary and Bee-Tique, and Simpson's Bee Supply. If you pre-order your beekeeping supplies, these vendors will bring them to the conference and you will save on shipping and handling.

For more details, go to : www.OhioStateBeekeepers.org .

Get your honey entries ready for our every popular Honey Judging Contest, judged by Jim Thompson and John Grafton

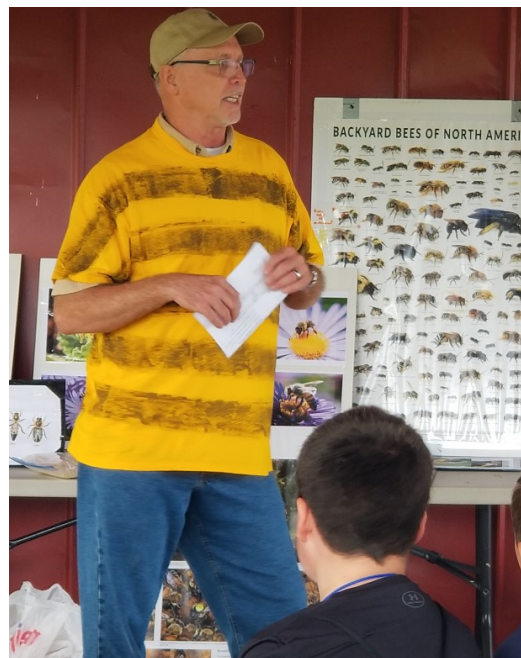
Hug the Earth, Pollinator Report

Vickie Bowman

The “Hug The Earth, Pollinator Project” to help 800 students from Monroe Concord School District understand pollinators and the problems associated with pollinator decline was a great success. Miami Valley Beekeeper’s Association in partnership with Miami County Park District was invited to present information on honey bees and pollination to students grade K through 5. The program went from September 10th thru September 14th and again on September 17

Our display included posters, “find the queen challenge”, bees wax, mounted bees with magnifying glasses, fresh fruits and vegetables, an observation nuc, an observation hive with a frame of honey and a frame of drawn comb, a bee hive (without the bees until the last day when a few bees decided to move in), a hollow log, and a bee suit to model. The students had a great time with the magnifying glasses, not looking at the mounted bees but instead checking out the observation nuc. It was a great time working with the young ones, their enthusiasm was uplifting. Completely Adorable.

Elaine Pleiman did a wonderful job making cute “5 banded Italian” bee shirts for the presenters to wear. Ted Duncan (pictured on right), Lynell Miller, Terry Lieberman-Smith, John Martinez, Dan Richardson, Sue Evans, Chrystal Reese and myself, Vickie Bowman, were the presenters.



THANK YOU EVERYONE FOR YOUR PARTICIPATION IN THIS WONDERFUL PROJECT!

The Basic Buzz in the Apiary

October

- Prepare colonies for winter
- Begin fall feeding with heavy syrup (2 parts sugar to 1 part water), if needed
- Unite weak colonies with stronger colonies
- Put on entrance reducers to keep out vermin

November

- Inventory your equipment— make a checklist for what you’ll need next year— buy it at the OSBA Fall Conference on November 1
- Develop & implement your honey marketing program, especially for the holiday season
- Begin late-fall feeding
- Make yourself a reminder about the 2 local conferences in March!

What’s Bloomin’

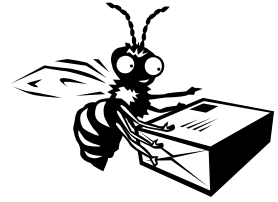
Nectar Sources: Vetches, Mints, Milkweed

Nectar and Pollen: Liatris, Sunflowers, Tickseeds, Goldenrods, Joe Pye weed, Bonesets, Fall Asters, Ironweeds, Eupatorium

Pollen: Golden Asters, Ox-eye



Bee-ing a Step Ahead



Our Official Facebook Page:

<https://www.facebook.com/miamivalleybeekeepers/>

- October 1 – Equipping Your Apiary - Building equipment such as candy boards
November 3 OSBA Fall Conference, Tolles Career and Technical Center, Plain City, OH
November 5 – Member Carry-In, Officer Elections, Bee Buck Raffle.

Miami Valley Beekeepers Association Membership Form 2018

Membership dues are \$20 per calendar year

Membership benefits include:

Monthly meetings (exp. For Dec/Jan) with educational speakers
Monthly e-zine with beekeeping articles and other features
Sponsoring public presentations
Education in the MVBA Apiary
and more!

Name

Address

Phone

Email

Make checks out to: Miami Valley Beekeepers Association and Remit Payment to:

Miami Valley Beekeepers Association

900 Antioch School Rd

Vandalia OH 45377