

**Buzzin' About**

**April 2021**

# The Miami Valley Beekeepers Association

Newsletter

**Monday April 5, 2021**

**7:00 p.m.**

**Zoom!**

**Agenda**

**Club Updates**

**Volunteer Sign-ups**

**Guest Speaker:**

**Terry Lieberman-Smith**

**Topic:**

**“Nucs– An Insurance Policy for Your Apiary!”**

**MVBA Contacts**

**President**

Chrystal Reese

**Vice President**

Lydia Pleiman

**Secretary**

Donna Meade

**Treasurer**

Brian Willis

**At Large**

Dan Richardson

Tim Ray

**Newsletter**

Terry Lieberman-Smith

**Apiary Manager**

Patrick Reese

**Renew your membership**

Can't attend this month's meeting?

Use the renewal form on page 6.

Or go online:

<http://www.paypal.com/instantcommerce/checkout/9XHL8DY4QH62Q>

## President Notes

Welcome! It was fantastic to see so many of your faces at the March MVBA Zoom meeting! I miss seeing you all!

April is approaching quickly and many beekeepers are installing packages of bees. It is common to need to feed your current bees in the spring. When you think about what should you feed them, the first answer may feel obvious – honey, of course! Actually, do not feed your bees honey. Honey, especially commercial honey, often contains American Foul Brood spores. There are few treatments for AFB, and if your hive becomes infected, the most effective treatment is to burn the hive. Feed your bees sugar syrup, because AFB spores can survive in honey for decades. You may ask, can I use leftover honey from a dead-out? The answer is a solid – it depends. It’s important to know why your hive died. If there is even a chance they died from disease, it’s best to destroy that honey and continue with sugar water.

At the March meeting I noted that we were uncharacteristically at zero Growing Degree Days on March 1. That would indicate a slow spring arrival. Well March is for madness, and in 15 days we’ve jumped to 38. By the end of the week several species of ma-

ple will be in full bloom and our bees will be bringing in pollen. This is not great news for the maple syrup producers among us, but it is an exciting time to be a beekeeper!

We discussed registering your hives. First, be sure to register your hives with the state of Ohio. This is required of all active apiaries. It’s a simple form found at <https://agri.ohio.gov/wps/portal/gov/oda/divisions/plant-health/resources/oscr> and costs just \$5. Registration deadline is June 1.

Another program, BeeCheck, is a free, voluntary mapping tool that allows beekeepers to be notified if any local pesticide applicators are spraying in their area. That registry can be found at [https://agri.ohio.gov/wps/portal/gov/oda/divisions/plant-health/forms/plnt\\_4201-002](https://agri.ohio.gov/wps/portal/gov/oda/divisions/plant-health/forms/plnt_4201-002)

The best way to know when your local farmers are potentially spreading something dangerous to your bees, or spraying insecticides, is to get to know your local farmer!

I look forward to seeing you virtually in April, where we can get to know our other local beekeepers! See you soon!

Chrystal Reese  
MVBA President

## MVBA Treasurer Report

Brian Willis

Checking Account		Total Holdings		Cash On Hand
Beginning Balance Checking Acct March 2021	\$ 3,603.09	\$ 3,825.89	\$ 222.60	Beginning Balance March 2021
<b>Income</b>				<b>Income during Meeting</b>
Member Dues	\$ 220.00			Member Dues
	\$ -			
<b>Total Income</b>	<b>Total for Deposit \$ 220.00</b>	<b>\$ 220.00</b>	<b>\$ -</b>	<b>Total meeting income (cash/checks received)</b>
<b>Expenses</b>				<b>Expenses</b>
	\$ -		\$ -	
	\$ -		\$ -	
	\$ -			
Total Check Withdrawals/Debits	\$ -			Total Cashbox Withdrawals
<b>Total Expenses</b>		<b>\$ -</b>		
Cash xfer (Deposit from Cashbox)	\$ -	\$ -	\$ -	Cash Xfer to lessen Cashbox contents
<b>Ending Checking Balance March 15 2021</b>	<b>\$ 3,823.09</b>		<b>\$ 222.60</b>	<b>Ending Cash Balance March 15 2021</b>
Monthly total Net change		\$ 220.00		
Previous month Net funds		\$ 3,825.89		
Sum balance should equal total holdings (Bank activity +/- Cash Activity)		\$ 4,045.89		This acts as a check to ensure activity = actual balances
<b>Total Holdings 15 March 2021 (Checking balance + Cash Balance)</b>		<b>\$ 4,045.69</b>		

# MVBA Secretary Report March 1, 2021

## ANNOUNCEMENTS

Swarm List – As a paid club member you can sign up to be on the swarm list. Free bees! Registration form to get on the list is in the February newsletter. Form needs to be submitted by Mar 15<sup>th</sup> to get on the master list submitted to the city police departments, fire departments, parks, townships, etc.

If your email address changes or you have additional members in your family that would like to receive the monthly newsletter, email that information to the club Treasurer, Brian Willis, [brianleewillis@gmail.com](mailto:brianleewillis@gmail.com)

### **Presentation: The Best of the Web – Finding New (Reliable) Sources On-Line**

by President Chrystal Reese

## WEBSITES

OSU Growing Degree Day Calculator

<https://www.oardc.ohio-state.edu/gdd/> The site provides information on what foraging resources are currently available for your bees, specific to your area. Web-Based Introductory Beekeeping Training Program

[http://www.ohiostatebeekeepers.org/beekeeping\\_classes/](http://www.ohiostatebeekeepers.org/beekeeping_classes/) Great resource for educational videos.

In the Beekeeper's Workshop

<http://www.michiganbees.org/beekeeping/in-the-beekeepers-workshop/> This site provides instruction and plans on making everything from hive components to a honey bucket heater, saving you money!

## VIDEOS

University of Guelph Honey Bee Research Centre – <https://honeybee.uoguelph.ca/videos/>

JC's Bees – Jason Chrisman –

[https://www.youtube.com/channel/UCry\\_ki77-E2cV52XsbNfQaA](https://www.youtube.com/channel/UCry_ki77-E2cV52XsbNfQaA) Vino Farms –

<https://www.youtube.com/channel/UC-xczyIjpDKuM00-45OUrvq>

## BOOKS

Beekeeping for Dummies

Queen Rearing Essentials – Lawrence John Connor

Increase Essentials – Lawrence John Connor

The Beekeeper's Bible – Richard Jones

The Beekeeper's Handbook – Diana Sammataro and Alphonse Avitabile

### **What is the Plan? How you want the year to go.**

Apiary Manager Patrick Reese presented and addressed the following questions.

Do I still want to be a beekeeper? If the answer is yes, continue reading.

*How many hives do I want to manage?* You should have a minimum of two hives, but not more than you are able to inspect all hives at least every two weeks during Spring/Summer. Equipment limitations and 3 mile radius forage area considerations.

*How will I achieve that number?* Call Steve Johnson for package bees arriving in April/May, perform Splits, catch Swarms. Reduce number of hives by splitting and selling nucs or donating to a newbie.

*Where will I manage those hives?* Backyard (check city ordinances and be a good neighbor); friend or relatives property (get written agreement); landowner's looking to host hives.

*Do I have the equipment I need?* Most bee supply houses sell unassembled equipment at a savings compared to assembled. Team up with a buddy to get bulk discounts.

*What is my crisis management plan?* Be prepared for stings and ready to call 911 if needed. Re-queen when necessary. Guard against pests such as skunks, raccoons, or coyotes that can knock over your hives, mouse guards to prevent smaller pests.

*How will I educate myself?* Excellent resources provided above. Beware of the "fringe element" online.

## Other Topics of Discussion

Honey – the club has honey for sale to members for \$20 for three 1lb jars, or \$7 each for single 1lb jars.

Apiary Report – Out of 4 hives, 2 hives have been lost this winter. We're still searching for a place for the club hives where we could also have meetings when they are allowed.

If you would like to share your contact information with other MVBA member so you can talk bees or reach out for help or advice, please send an email to [brianleewillis@gmail.com](mailto:brianleewillis@gmail.com). He will compile a list and send it out to members.

Local resource for beekeeping supplies and equipment – Rick Creech 937-570-1159 He has fair prices, large inventory and is located in Tipp City.

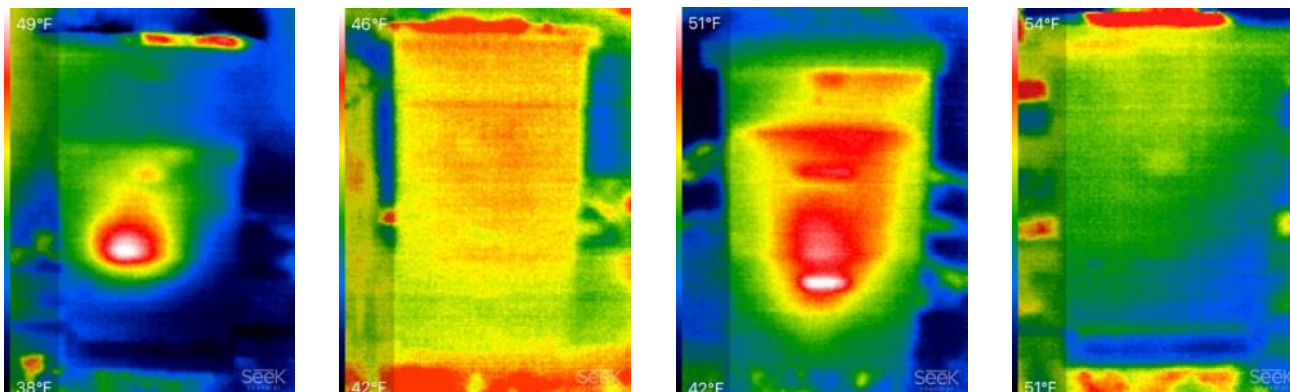
Tim Reuber discussed the site <https://beecheck.org/>

*(Continued on page 4)*

# MVBA Apiary Report March 2021

Welcome back to the Apiary... and the coldest February and March we've had for awhile. Just when we thought late Winter would be pleasant and mild so that we may even see the girls out on most days, well guess again! Lately, we've had some warm days where I've seen them checking out some spilled maple sap, but February was brutal. We entered Winter with four hives, some of them a little stronger than others. We had treated with Formic Acid prior to buttoning up the hives, and then placed an "attic" box on each hives. Inside the attic, we placed a large sugar brick so they'll have some emergency stores.

In February, I was able to get out the thermal camera and take some pics of the hives:



It looks like at least two of the hives have a good cluster of bees in the hive, clustered tightly around the Queen. The other two hives look like good candidates for some Old Drone packages (get your order in today!), or they may become homes for splits from the other hives. Thermal pics are not the final verdict on whether the hive is still alive, but if one sees the red-hot flare in the hive, that is a great indication there are live bees inside.

I was also able to check on the sugar bricks in the tops of the hives. So far, so good... there is plenty of sugar in there. With the bees getting active during warm days, I'll keep a close eye on the sugar to make sure they have food until the bloom. Until then, good luck in your Apiary!

Patrick Reese  
Apiary Manager

*(Continued from page 3)*

that he uses to determine what/when/where aerial pesticide spraying will be so he can protect his bees. "BeeCheck is a voluntary communication tool that enables beekeepers and pesticide applicators to work together to protect apiaries through use of the BeeCheck mapping program." He also recommends <https://fieldwatch.com/>

Tim also shared the following information. A rule by the EPA on 2/23/2021 establishes an exemption from the requirement of a tolerance for residues of oxalic acid on honey and honeycomb. <https://www.federalregister.gov/documents/2021/02/23/2021-03256/oxalic-acid-exemption-from-the-requirement-of-a-tolerance>.

# Get Your Gardens Ready for Blooms

**Nectar:** Mustards

**Pollen:** Poplars, Willows, Oak, Cedar, Junipers

**Pollen and Nectar:** Apple Trees, Chickweed, Hackberry Trees, Dandelion, Redbud Trees

Want to know what is blooming in your area? Know what's blooming and you can plan your honey crop (or if you need to feed your girls)

<http://www.oardc.ohio-state.edu/gdd/>



## The Basic Buzz in the Apiary

### April

- Monitor colony stores, esp. if weather is cold & wet
- Inspect brood nest for laying queen, disease, etc
- Introduce package bees on drawn combs
- Requeen colonies with failing queens
- Reverse brood chambers when weather moderates
- Add supers to strong colonies at maple or dandelion bloom
- Unite weak colonies
- Equalize strength of all colonies
- Renew your subscription to Bee Culture and American Bee Journal (discounted if you belong to a local association)
- Remember to register your hives: [Plant Health Forms | Ohio Department of Agriculture](#)

### May

- Monitor colonies for queen cells
- Control swarming
- Add more supers as needed (oversuper)
- Place queen excluder below shallow super on colonies for comb honey
- Install packages on foundation.
- Split strong colonies
- Capture swarms
- Cull and replace defective combs with full sheets of foundation
- Begin implementing an IPM program for the control of mites
- Add room for bees, either by honey supers, or deeps - remember the 7/10 rule - when they have filled 7 of the 10 frames, its time to add space!

---

## Miami Valley Beekeepers Association Membership Form 2021

Membership dues are \$20 per calendar year

Membership benefits include:

Monthly meetings (exp. For Dec/Jan) with educational speakers  
Monthly e-zine with beekeeping articles and other features  
Sponsoring public presentations  
Education in the MVBA Apiary  
***and more!***

Name

Address

Phone

Email

---

---

---

---

---

Make checks out to: Miami Valley Beekeepers Association and Remit Payment to:

Miami Valley Beekeepers Association  
2455 Piqua-Troy Rd  
Troy, OH 45373

## Seasonal Resource Page - Winter-Spring Feeding

### Home-Made version of Honey Bee Healthy (adapted from Beesource)

5 cups water  
2 ½ pounds of sugar  
15 drops spearmint oil  
15 drops lemongrass oil

Heat the water to a boil. Remove from heat and stir in the sugar until dissolved. Once the sugar water has cooled, add the essential oils. Stir until everything is evenly distributed.

This solution should have a strong scent and not be left open around bees.

Cool completely before using.

I store this concentrate in the fridge -label it so that your family doesn't drink it!!

Approx. dosage: 1 tsp per quart of 1:1 sugar syrup for feeding

### Marshmallow Bee Fondant

3 bags (10.5 oz) marshmallows  
½ c. water  
4 pounds confectioners sugar  
1 t. Homemade mix from recipe above

Put marshmallows in a microwave safe bowl. Bowl needs to be large because marshmallows will puff up and cause a mess if they overflow. Pour water over marshmallows. Microwave, 20 seconds at a time, until melted.

Carefully remove from microwave. Stir in powdered sugar and honeebhealthy. Once it is difficult to stir, turn out on cutting board or countertop that has been dusted with confectioner's sugar. Knead in remaining sugar.

Coat the fondant with a light layer of shortening to help keep it moist. Wrap in several layers of plastic wrap.